

## COMPENSATION AND BENEFITS

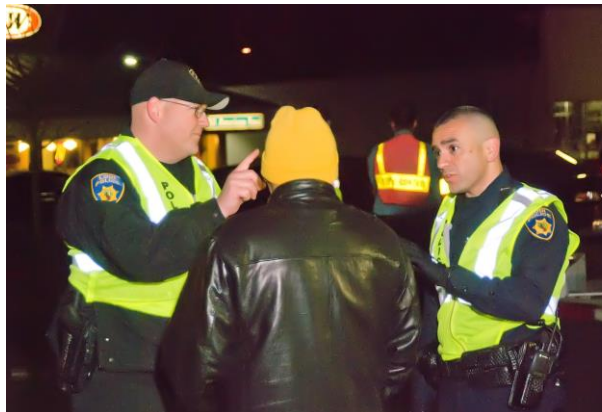
Lodi offers excellent pay and benefits.

Current Police Officer Salary Range is \$5,296 - \$6,437. Salary step depends on qualifications.

1. PERS 3% @ 55 retirement for classic members of PERS, highest 3 year average. PERS 2.7 @ 57 retirement for new PERS members, highest 3 year average.
2. 4 – 10 shift schedule for most assignments, including patrol
3. Incentive pay for Bilingual, Special Assignments, Master Officer, and Education.
4. State of the art equipment.
5. 51,000 square foot Police Station and Jail completed in 2004, including an attached court house.
6. Uniform allowance of \$950, paid in full at appointment.
7. Special Assignments include Motors, Bike Patrol, CINT, K-9, SWAT, Special Investigations, General Investigations, FET, MAIT, Bomb Squad, Honor Guard, Auto Theft Task Force, AB109 Task Force and School Resource Officers.
8. The City of Lodi offers numerous medical, dental, vision and chiropractic service plans.
9. 3% Deferred Compensation matching contribution.

### Mission Statement:

The mission of the Lodi Police Department is to ensure the safety and security of our community by reducing crime, creating strong partnerships, and investing in our employees to prepare for the future.



### Lodi Police Department

215 W. Elm St. Lodi, CA 95240

Phone: 209-333-6727

Fax: 209-333-6792

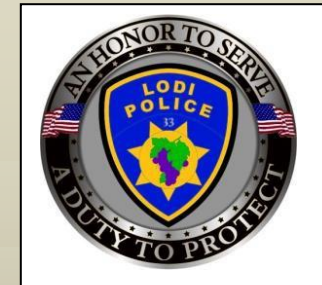
<http://www.lodi.gov/police/>

## THE LODI POLICE DEPARTMENT



### POLICE OFFICER

*AN HONOR TO SERVE...  
A DUTY TO PROTECT...*

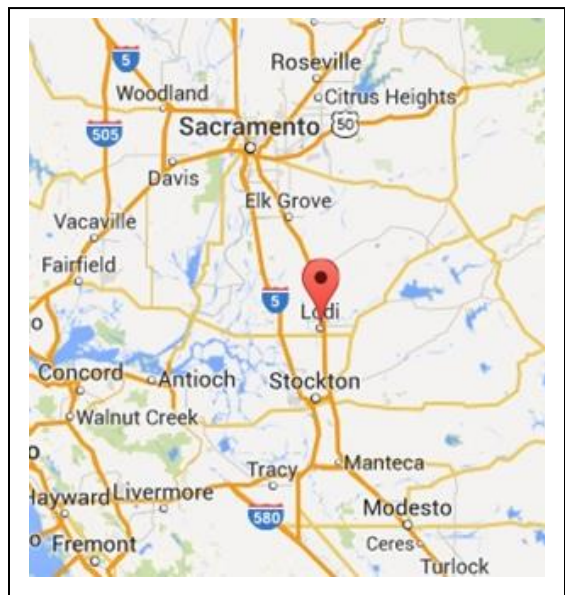


**THE LODI POLICE  
DEPARTMENT INVITES  
CAREER MINDED  
PROFESSIONALS TO JOIN OUR  
LPD FAMILY!**

The City of Lodi is a community of 63,000 residents serviced by 71 sworn officers. Lodi is located on the banks of the Mokelumne River and is close to over 1,200 miles of waterways in the San Joaquin Delta. Nestled in the Central Valley's wine country, Lodi is a short distance to the San Francisco Bay Area, Yosemite, Lake Tahoe and Sacramento.

### We Value:

- Prior law enforcement experience
- College education
- Writing skills
- People skills
- Diverse cultural backgrounds
- Spanish and other bilingual skills



### Applications:

Applications will not be accepted by fax or e-mail. Applications can be submitted in person to the City of Lodi Human Resources Department, or online using your Government Jobs (Neo Gov) account through our Human Resources Website:

<http://agency.governmentjobs.com/lodi/default.cfm>

### We would like to hear from you!

CALL OUR CAREER LINE AT:

209-333-5544

EMAIL: Sergeant Tim Fritz

[tfritz@pd.lodi.gov](mailto:tfritz@pd.lodi.gov)

VISIT OUR WEBSITE AT:

<http://www.lodi.gov/police/>



Follow the above QR Code to fill out an application, or visit:

<http://agency.governmentjobs.com/lodi/default.cfm>

Lodi PD is a full service police department providing professional protection and superior service to our community of 63,000 residents in the San Joaquin Valley. We are proud to have implemented Community Oriented Policing long before it was fashionable. It is no small part of why we enjoy a low crime rate and excellent quality of life. We are dedicated to providing the finest policing product available anywhere, to all of the residents and visitors in our community.

### Social Media:



Check out our smartphone app. Available on Microsoft, Android and Itunes.



<https://www.facebook.com/pages/Lodi-Police-Department/162866253863>



<https://twitter.com/LodiPolice>